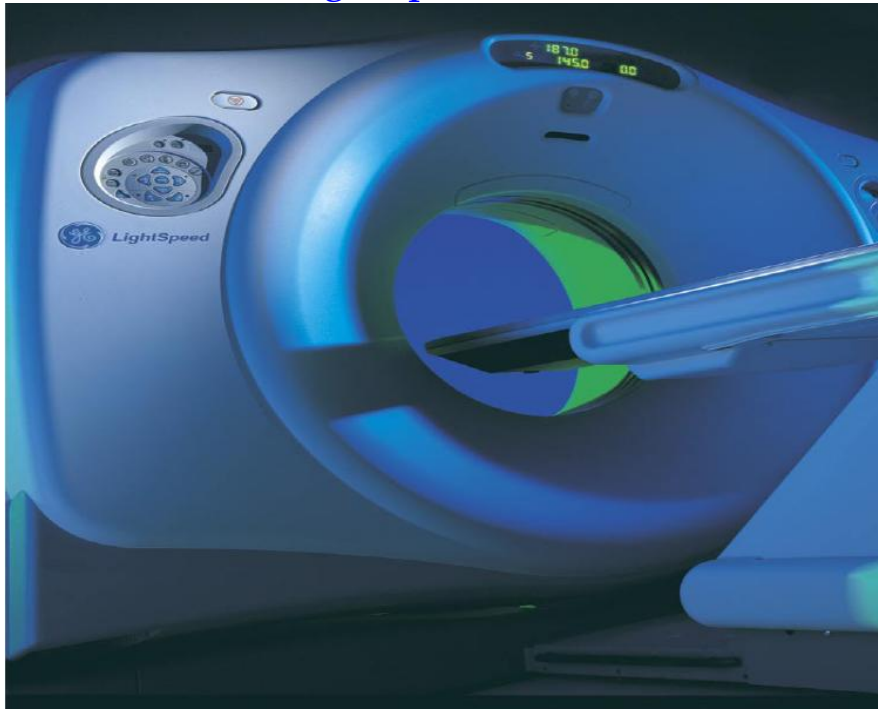


GE LightSpeed - 16 Slice



Typical Manufacturer's Picture

LightSpeed System includes:

SCAN PARAMETERS

.5, .6, .7, .8, .9, 1, 2, 3, 4 second scans
80,100,120,140 kVp
10- 440 mA in 10mA increments
.625, 1.25, 2.5, 3.75, 5, 7.5, 10 mm slice thickness
1 second minimum interscan delay
25, 50 cm scan fields of view
16 x 912 No. detection channels
120 sec max scan time
170 cm max scan volume

IMAGE RECONSTRUCTION

Silicon Graphics Octane Computer
.5 sec reconstruction time per slice



E-114 GIDC – Savli, Manjusar-Savli road,
Dist: Vadodara, Tal: Savli, Pin Code 391775,
Phone# +91-2667-264736, Fax# +91-2667-264736 Email: info@somatechindia.com
Rev 10.10

512 x 512 reconstruction matrix

73GB Hard Disk
20,000 Online Images
2.3 GB MOD Archival Storage
2000, 1 sec. scan raw data files

DISPLAY

2 No of Monitors ,one for Scan and one for display.
1280 x1024 Matrices, Pixels
Up to 16 slices displayed at once

TABLE/GANTRY

51-107/170cm vertical range
135cm longitudinal scannable range
Supports 400 lb patients accurately
70cm gantry aperture
±30 gantry tilt

GENERATOR/TUBE

53.2 kW maximum power
6.3 MHU anode heat capacity
840 KHU/min max anode heat dissipation rate

